

05/02/2014

II International Snowplough Championship

The II International Snowplough Championship was held during the XIV International Winter Road Congress hosted by the World Road Association between 4 and 7 February in Andorra la Vella. The event was organised by the Road Operations and Maintenance Department (COEX), which reports to Andorra's Minister of Economy and Territorial Planning.

The championship comprised two tests held on 4 and 5 February at the Grandvalira Circuit, Puerto de Envalira, at a height of 2,200m and around 28 kilometres from Highway 2 (CG2).

This friendly competition between Snowplough drivers from around the world assessed their driving skills on a test circuit as well as their safety and mechanical knowhow.

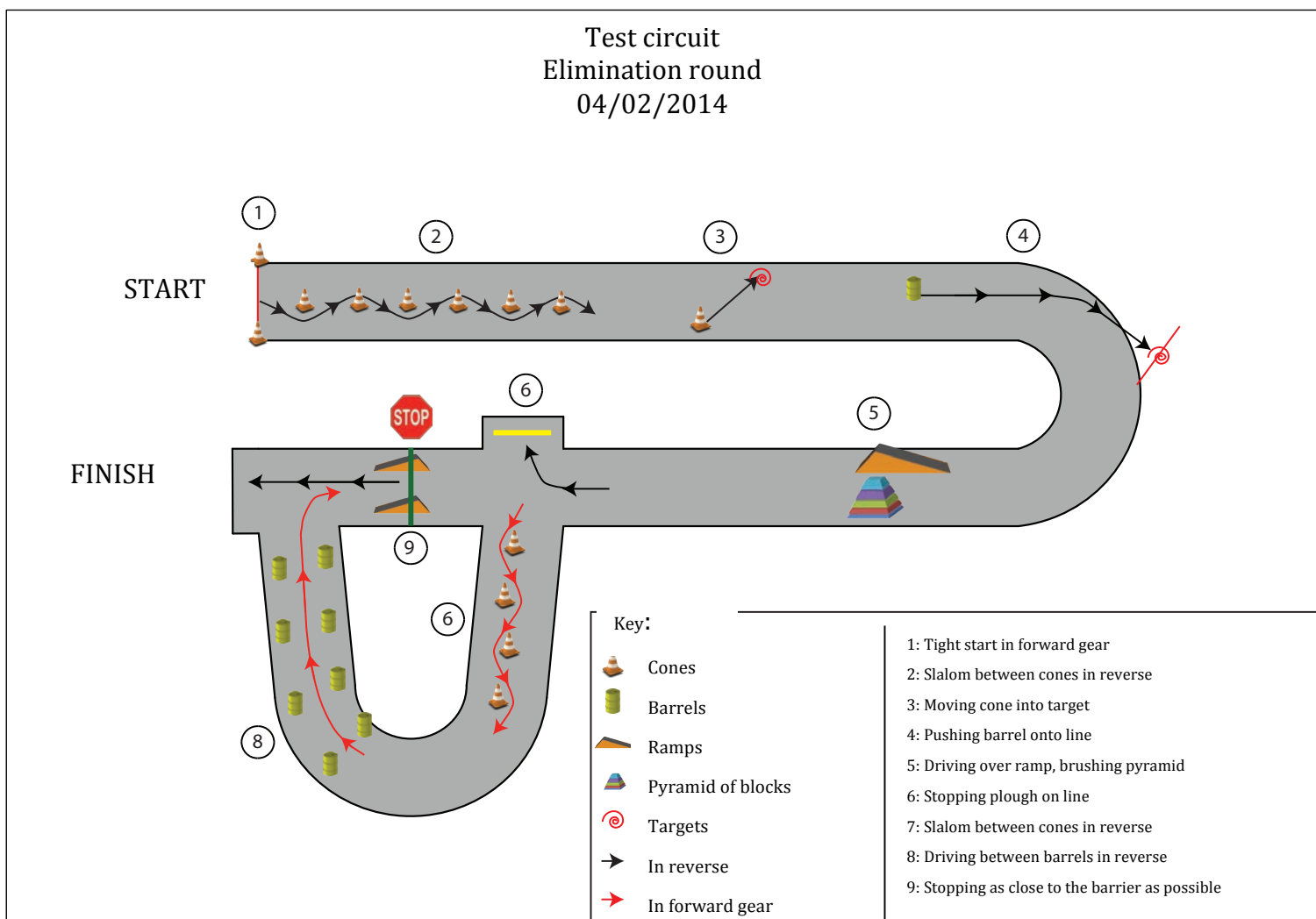
This report describes the various tests and the results of the competition.



I] Elimination round

An elimination round was held on 4 February 2014 to select the top 10 drivers for the final.

During this round, each competitor was tested on a circuit with various driving challenges such as a slalom, stops, obstacles that had to be avoided, etc. The test circuit was divided into nine tests, as shown on the following plan of the route.



a) Details of the test

Each competitor was given a score out of 600, split as per the following criteria:

- Test circuit - 500 points
- Speed - 100 points

Test circuit	500 points
---------------------	-------------------

1. Entry onto circuit 20 points

The test involved driving the Snowplough onto the circuit with the plough down, passing through two cones at the start line.

Points were awarded as follows:

- No cones hit 20 points
- One cone hit 10 points
- Both cones hit 0 points

2. Slalom between cones 60 points

Competitors had to drive forward through a slalom between cones. Stopping during the test incurred a penalty.

Penalties were given as follows:

- One or more cones hit - 10 points per cone
- Stopping the Snowplough during the test - 15 points per stop

3. Pushing cone 30 points

This test involved pushing a cone into the target on the circuit.

Points were awarded as follows:

- Cone fully inside the target 30 points
- Cone touching the target 10 points
- Cone outside the target 0 points

4. Moving barrel 35 points

Competitors had to move a barrel on the circuit as close as possible to the line outside the circuit.

Points were awarded as follows:

- 0 to 200 mm 35 points
- 201 to 400 mm 25 points
- 401 to 600 mm 15 points
- Over 601 mm 0 points

5. Driving over ramp, brushing pyramid 75 points

Competitors had to drive over a ramp, brushing as close as possible to the pyramid and knocking over as many blocks as possible (without touching it) with the plough.

Points were awarded as follows:

- Number of blocks left standing: 0 75 points
- Number of blocks left standing: 1 65 points
- Number of blocks left standing: 2 50 points
- Number of blocks left standing: 3 30 points

- Number of blocks left standing: 4 5 points
- Number of blocks left standing: 5 0 points
- Pyramid touched 0 points for the test
- Wheels off ramp 0 points for the test

6. Stopping plough on line 40 points

Competitors had to stop their vehicle with their front plough on the line. Only one attempt was permitted and counted.

Points were awarded as follows:

- Plough touching line 40 points
- Plough not touching line 0 points

7. Slalom between cones in reverse 100 points

Competitors had to drive backwards through a slalom between cones. Stopping during the test incurred a penalty.

Penalties were given as follows:

- One or more cones hit - 25 points per barrel
- Stopping the Snowplough during the test - 30 points per stop

8. Reversing between barrels 60 points

Competitors had to drive backwards through barrels without touching them.

Penalties were given as follows:

- One or more barrels hit - 10 points per barrel
- Stopping the Snowplough during the test - 15 points per stop

9. Stopping in reverse 80 points

Competitors had to reverse up two ramps and position the trailer on their vehicle as close to the barrier as possible without touching it. Only the first stop counted.

Points were awarded as follows:

- 0 to 150 mm 80 points
- 151 to 200 mm 70 points
- 201 to 250 mm 55 points
- 251 to 300 mm 30 points
- 301 to 350 mm 10 points
- Over 351 mm 0 points
- Contact with barrier 0 points for the test
- Wheels off ramps 0 points for the test

Speed	100 points
--------------	-------------------

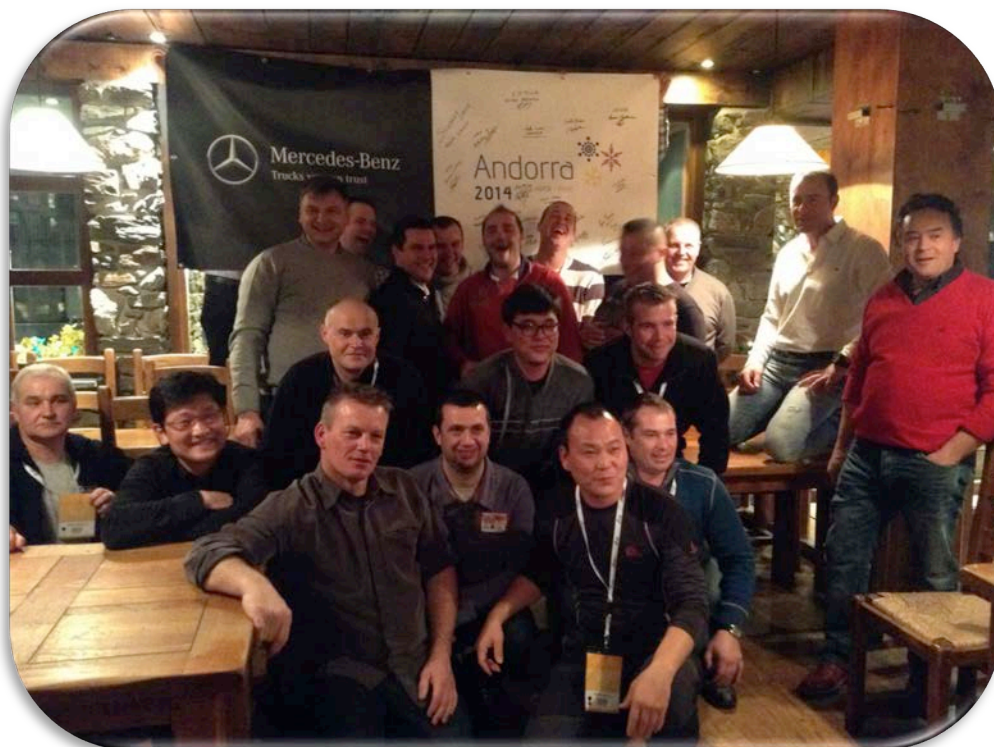
Each competitor was timed for the entire circuit.

Points were awarded as follows:

- Less than 6 minutes 100 points
- 6 minutes and 1 second to 7 minutes 50 points
- Over 7 minutes and 1 second 0 points

b) Driver classification in elimination round

Classification	Driver name	Points	Time
1	KIM Ik-Soo (KOR)	430	6:00
2	SUXDORF David (FRA)	430	6:44
3	STIRLING Trevor (GBR)	415	5:55
4	CARRIER Charles (CAN)	395	5:40
5	ROUANET Emmanuel (FRA)	385	6:48
6	JEONG Suk-Jin (KOR)	385	6:52
7	SUKYS Robertas (LTU)	355	4:36
8	THENINGE Pierre (FRA)	355	6:48
9	LESTANG Bertrand (AND)	350	6:20
10	DÍAZ Jonathan (AND)	345	6:26
11	FANLO FAUJOLA Francisco (ESP)	340	7:18
12	HAUBENWALLER Christian (AUT)	335	5:58
13	AIT BOUJEMAA Ahmed (MOR)	325	6:25
14	FRAILE TADEO José Luís (ESP)	320	7:06
15	PETIT Julien (FRA)	310	8:33
16	BELLOSTA Marcel (AND)	305	6:00
17	DESROCHERS Jean-Pierre (CAN)	270	6:40
18	IGNATAVICIUS Romas (LTU)	260	6:20
19	NAVIKAS Rimantas (LTU)	250	5:14
20	WEGHOFER Ewald (AUT)	245	7:35
21	YOO Hyoung-Sop (KOR)	235	7:03
22	DA SILVA Domingos (ESP)	205	7:05
23	LANGA SANCHEZ José Luís (ESP)	95	12:24
24	CHAMKHI Brahim (MOR)		
25	JEONG Hee-Dam (KOR)		



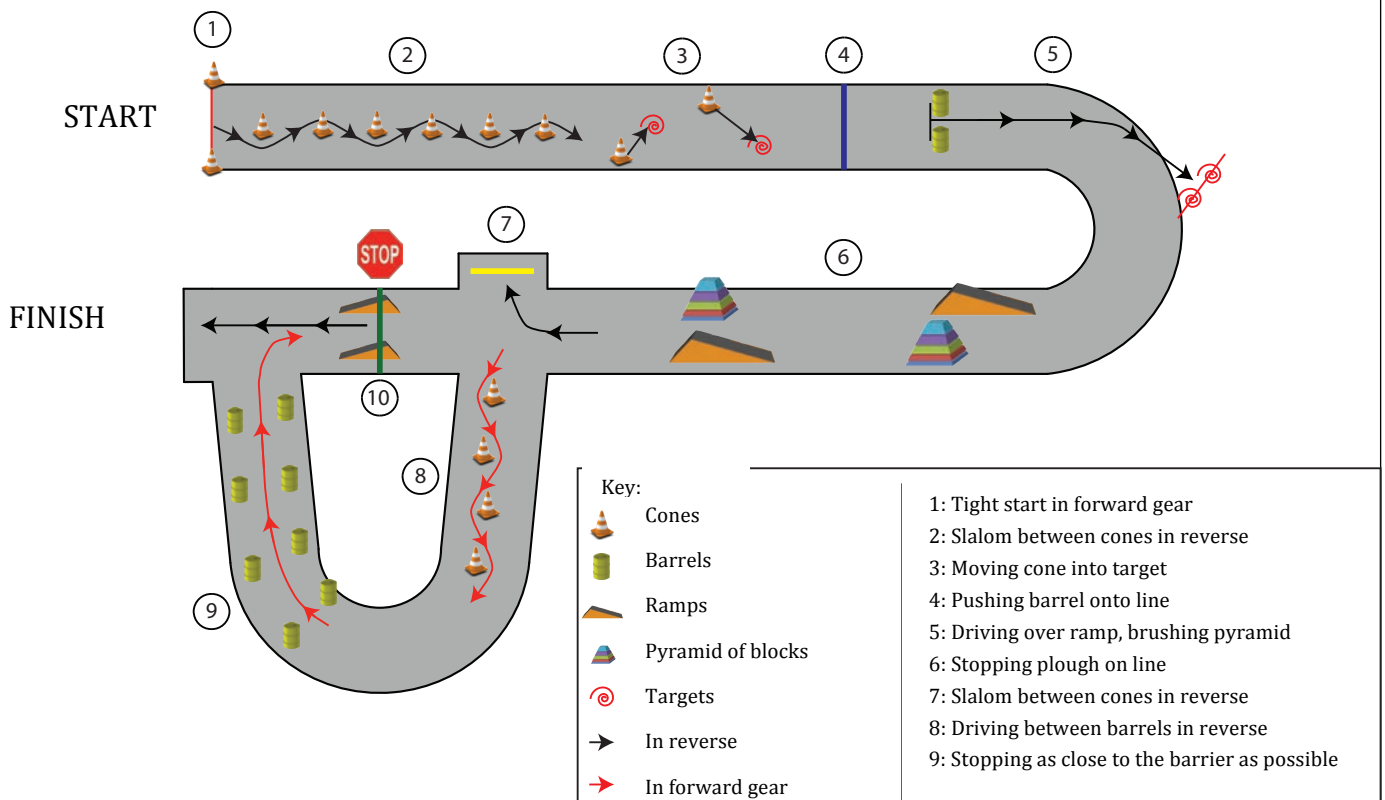
II] The final

After the cut was made in the elimatory round, the top 10 drivers competed in the final.

The final included a mechanical examination at the test circuit to test their knowledge of safety. Each driver had to inspect their vehicle and find any faults.

The circuit plan below provides details of the final driving test.

Test circuit
The final
05/02/2014



a) Details of the test

Each competitor was given a score out of a 1,000, split as per the following criteria.

- | | |
|-------------------------|---------------------|
| • Mechanical inspection | 20 % - 200 points |
| • Test circuit | 70 % - 700 points |
| • Speed | 10 % - 100 points |
| | 100 % - 1000 points |

Mechanical inspection **20 % - 200 points**

This test involved competitors having to find faults on a Snowplough within 15 minutes.

Points were awarded as follows:

- | | |
|---------------------|--------------|
| • Inspection report | - 100 points |
| • Faults detected | - 100 points |

Test circuit **70 % - 700 points**

1. Entry onto circuit 20 points

The test involved driving the Snowplough onto the circuit with the plough down, passing through two cones at the start line.

Points were awarded as follows:

- | | |
|------------------|-----------|
| • No cones hit | 20 points |
| • One cone hit | 10 points |
| • Both cones hit | 0 points |

2. Slalom between cones 6 % - 60 points

Competitors had to drive forward through a slalom between cones. Stopping during the test incurred a penalty.

Penalties were given as follows:

- | | |
|---|----------------------|
| • One or more cones hit | - 10 points per cone |
| • Stopping the Snowplough during the test | - 15 points per stop |

3. Pushing cone 6 % - 60 points

This test involved pushing a cone into the target on the circuit.

Points were awarded as follows:

- | | |
|--------------------------------|-----------|
| • Cone fully inside the target | 30 points |
| • Cone touching the target | 10 points |
| • Cone outside the target | 0 points |

4. Stopping back wheels on line 5 % - 50 points

Competitors had to stop the back wheels of their vehicle on a line on the ground. The entire test had to be performed in forward gear. Only the first stop counted. Measurements were taken from the back wheel axle to the line.

Points were awarded as follows:

- 0 to 100 mm 50 points
- 101 to 200 mm 30 points
- 201 to 400 mm 10 points
- Over 401 mm 0 points

5. Moving barrel 7 %- 70 points

Competitors had to move a barrel on the circuit as close as possible to the line outside the circuit.

Points were awarded as follows:

- 0 to 200 mm 35 points
- 201 to 400 mm 25 points
- 401 to 600 mm 15 points
- Over 601 mm 0 points

6. Driving over ramp, brushing pyramid 15 %- 150 points

Competitors had to drive over a ramp, brushing as close as possible to the pyramid and knocking over as many blocks as possible (without touching it) with the plough.

Points were awarded as follows:

- Number of blocks left standing: 0 75 points
- Number of blocks left standing: 1 65 points
- Number of blocks left standing: 2 50 points
- Number of blocks left standing: 3 30 points
- Number of blocks left standing: 4 5 points
- Number of blocks left standing: 5 0 points
- Pyramid touched 0 points for the test
- Wheels off ramp 0 points for the test

7. Stopping plough on line 5 % - 50 points

Competitors had to stop their vehicle with their front plough on the line. Only one attempt permitted and counted. Light flashed and horn sounded if touched.

Points were awarded as follows:

- Plough touching line 40 points
- Plough not touching line 0 points

8. Slalom between cones in reverse 10 % - 100 points

Competitors had to drive backwards through a slalom between cones. Stopping during the test incurred a penalty.

Penalties were given as follows:

- One or more cones hit - 25 points per barrel
- Stopping the Snowplough during the test - 30 points per stop

9. Reversing between barrels 6 % - 60 points

Competitors had to drive backwards through barrels without touching them.

Penalties were given as follows:

- One or more barrels hit - 10 points per barrel
- Stopping the Snowplough during the test - 15 points per stop

10. Stopping in reverse 8 % - 80 points

Competitors had to reverse up two ramps and position the trailer on their vehicle as close to the barrier as possible without touching it. Only the first stop counted.

Points were awarded as follows:

- 0 to 150 mm 80 points
- 151 to 200 mm 70 points
- 201 to 250 mm 55 points
- 251 to 300 mm 30 points
- 301 to 350 mm 10 points
- Over 351 mm 0 points
- Contact with barrier 0 points for the test
- Wheels off ramps 0 points for the test

Speed	10 % - 100 points
--------------	--------------------------

Each competitor was timed for the entire circuit.

Points were awarded as follows:

- Less than 6 minutes 100 points
- 6 minutes and 1 second to 7 minutes 50 points
- Over 7 minutes and 1 second 0 points



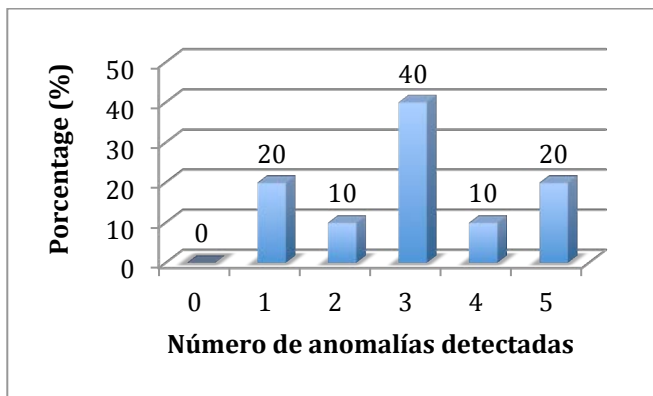
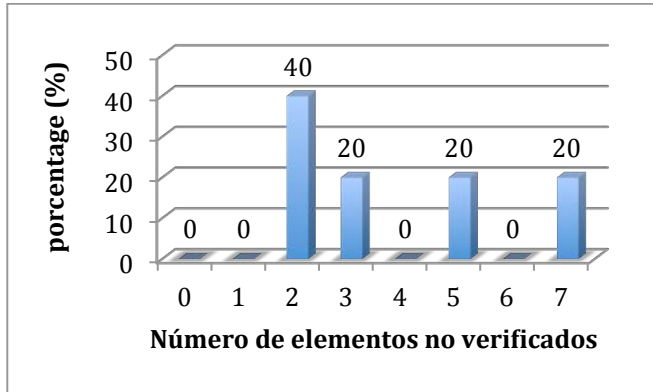
b) Final results

Classification	Name	Points	Time
1	LESTANG Bertrand (AND)	800	6:54
2	DÍAZ Jonathan (AND)	775	6:42
3	THENINGE Pierre (FRA)	755	6:22
4	KIM Ik-Soo (KOR)	645	6:55
5	SUXDORF David (FRA)	620	5:43
6	STIRLING Trevor (GBR)	620	5:59
7	CARRIER Charles (CAN)	610	6:58
8	ROUANET Emmanuel (FRA)	560	8:04
9	SUKYS Robertas (LTU)	500	4:57
10	JEONG Suk-Jin (KOR)	400	8:04



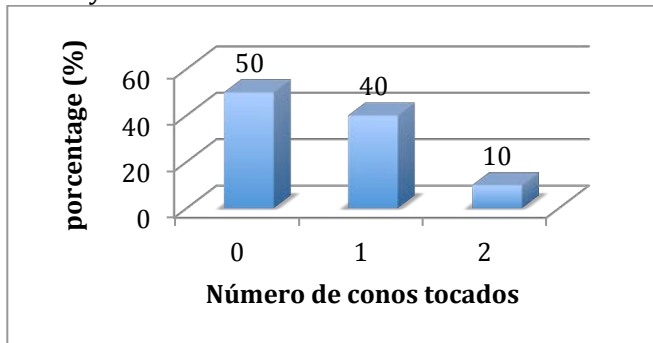
c) Stats

Mechanical test

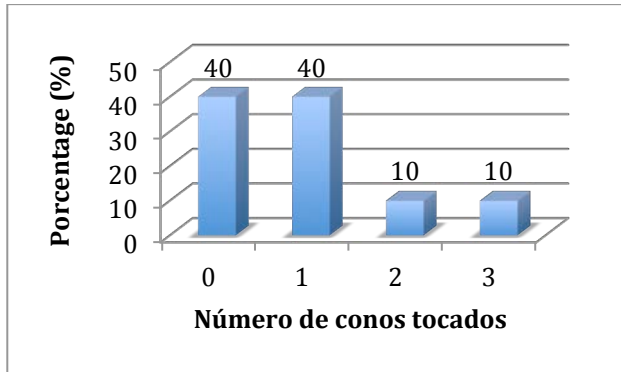


Test circuit

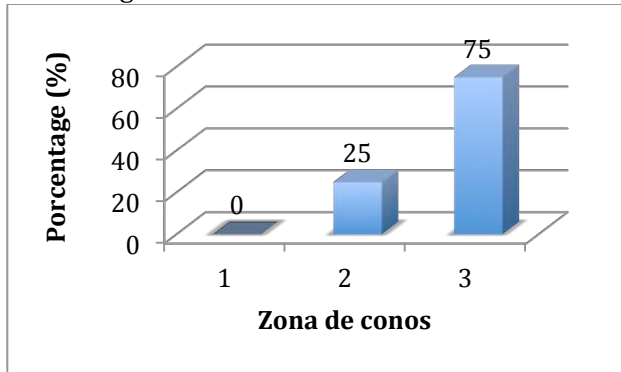
1. Entry onto circuit



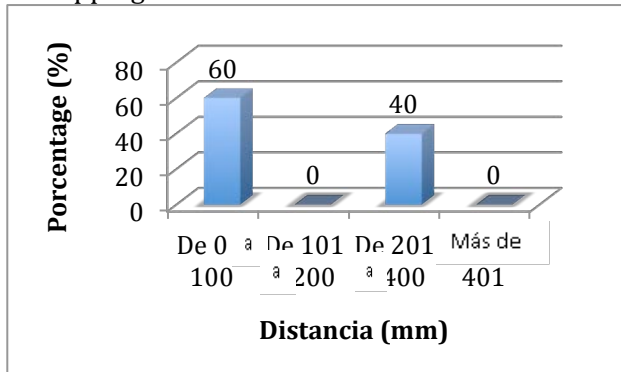
2. Slalom between cones



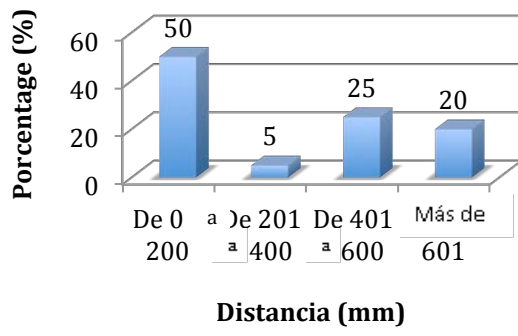
3. Pushing a cone



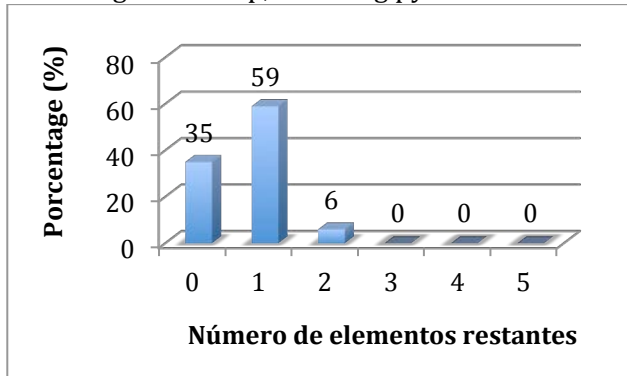
4. Stopping back wheels on line



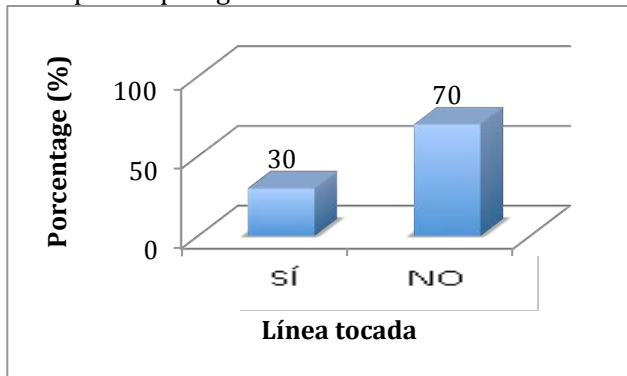
5. Moving barrel



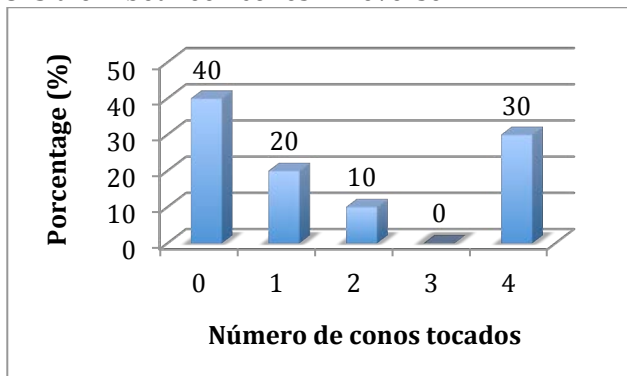
6. Driving over ramp, brushing pyramid



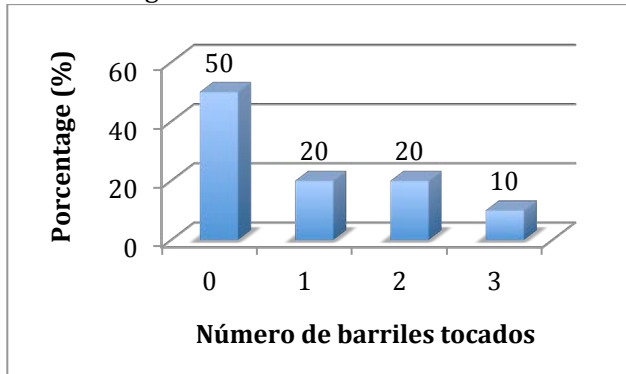
7. Stop with plough on line



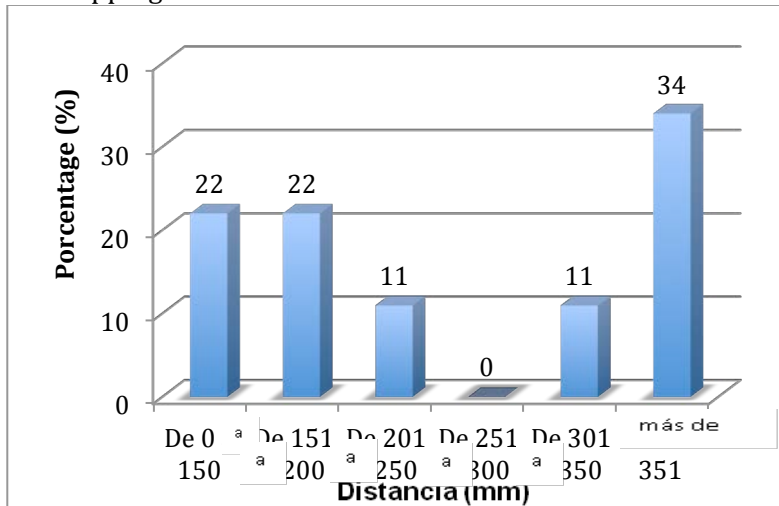
8. Slalom between cones in reverse



9. Reversing between barrels



10. Stopping in reverse



Speed

